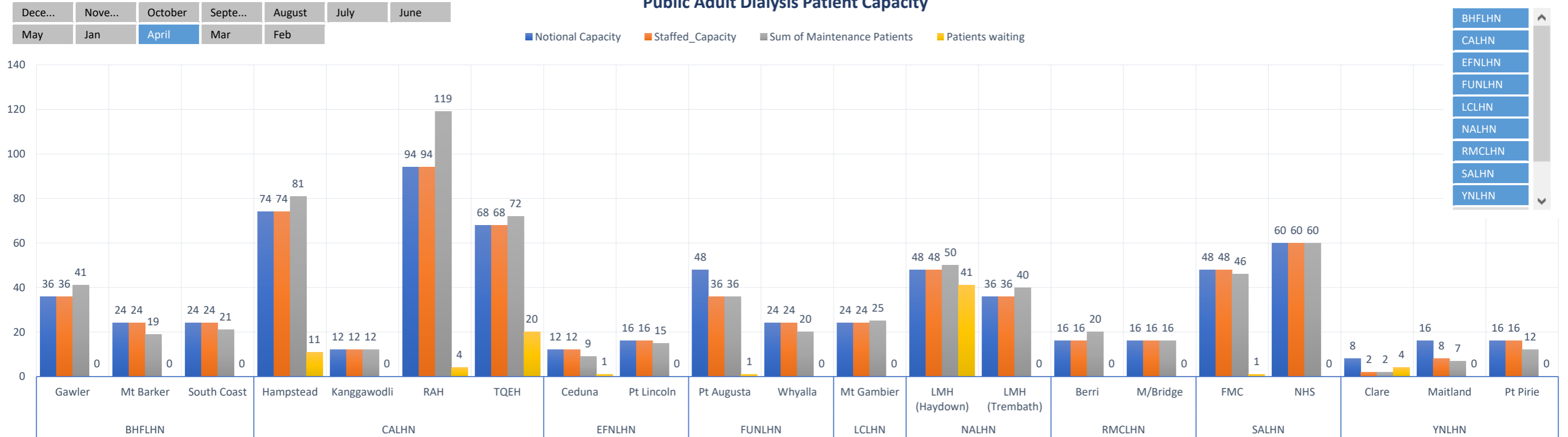


SA Adult Dialysis Activity Dashboard April 2026

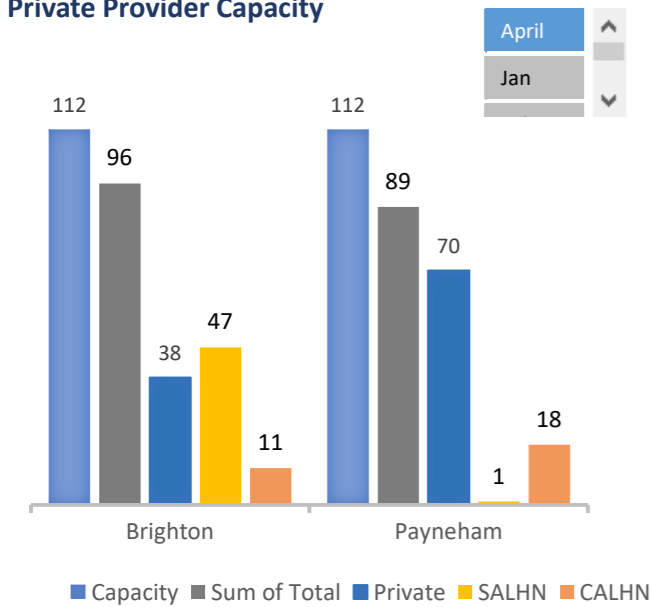


Public Adult Dialysis Patient Capacity

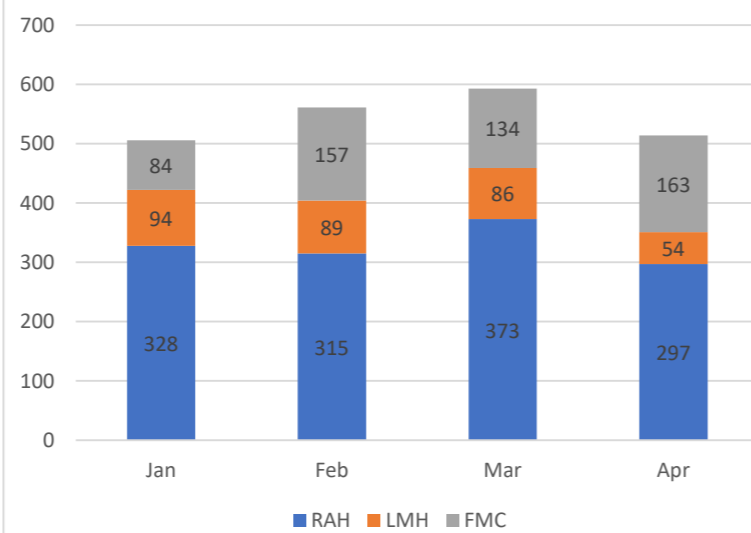


Notional capacity is the number of people who can be treated in a facility under typical conditions of 2 shifts per day, 3 days per week. Staffed capacity reflects the maximum number of patients able to be treated in a facility based on staff availability.

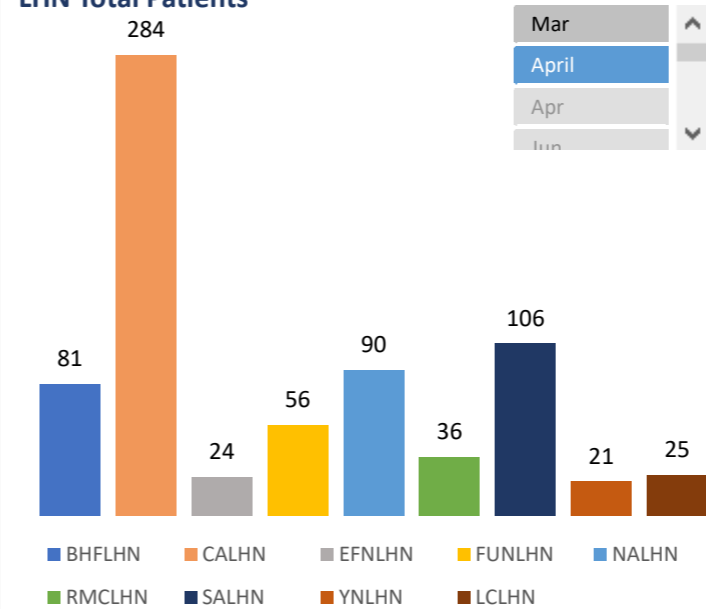
Private Provider Capacity



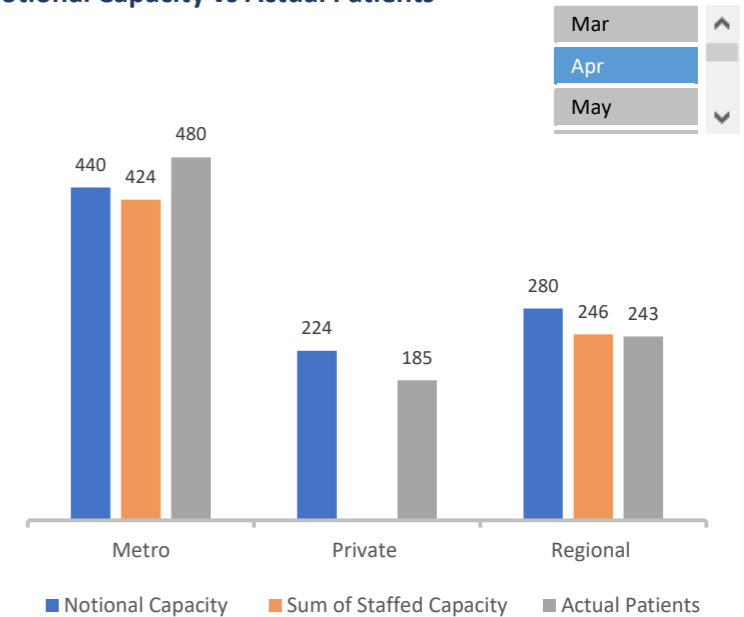
Monthly Inpatient Treatments: includes inpatient, rehab and call backs



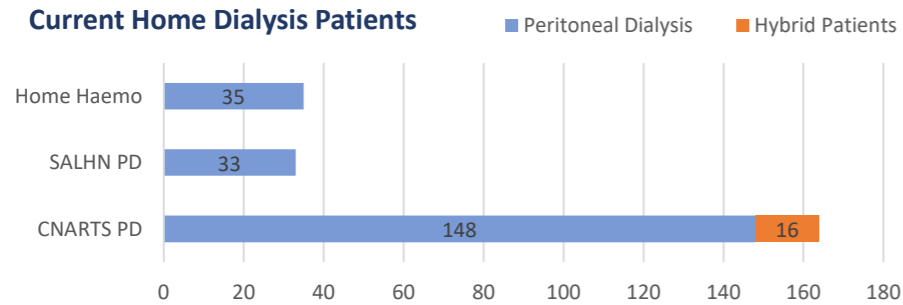
LHN Total Patients



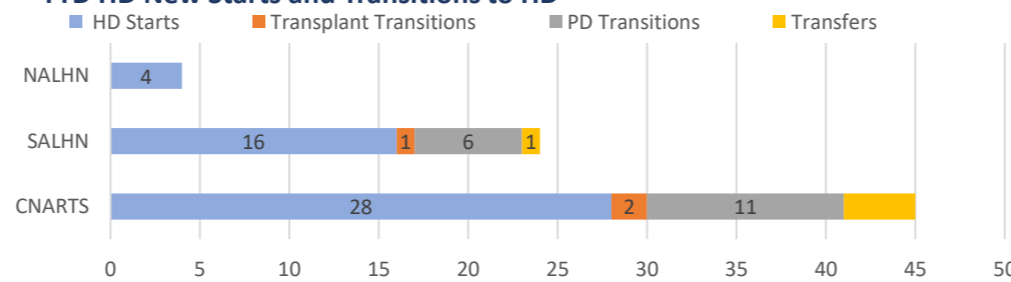
Notional Capacity vs Actual Patients



Current Home Dialysis Patients



YTD HD New Starts and Transitions to HD



YTD Transplants

