

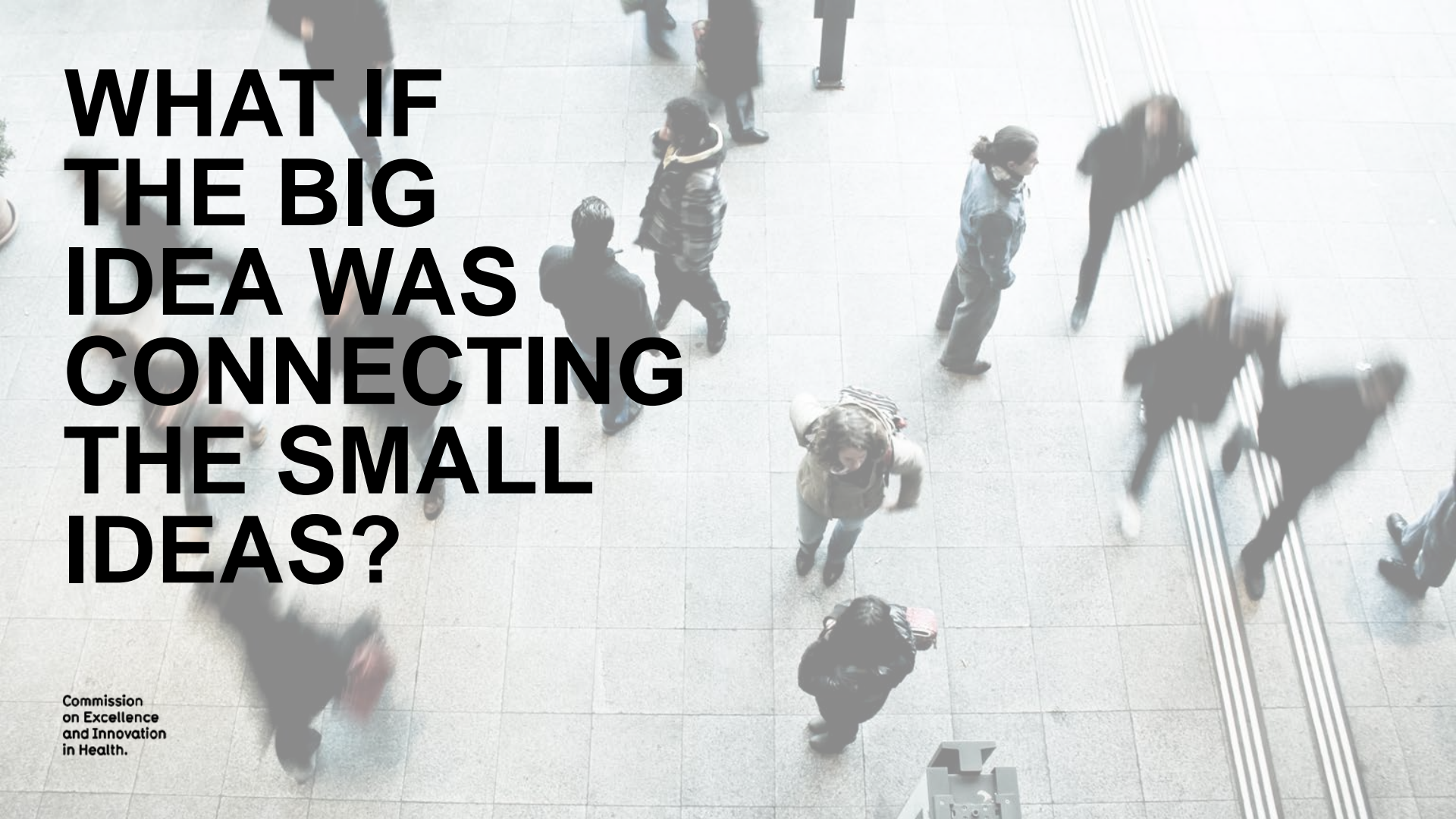
Improving Chronic Pain Care Workshop

25 February 2021

Australian Wine Centre

Commission
on Excellence
and Innovation
in Health.

Let's put imagination to work



WHAT IF THE BIG IDEA WAS CONNECTING THE SMALL IDEAS?

Commission
on Excellence
and Innovation
in Health.

CEIH Introduction

Katie Billing

CEIH Acting Commissioner

Commission
on Excellence
and Innovation
in Health.

Let's put imagination to work



Acknowledgement of Country

“We would like to acknowledge that this land we meet on today is the traditional land of the Kurna people, and that we respect their spiritual relationship with their country. We also acknowledge that the Kurna people are the custodians of the Kurna land, and that their cultural and heritage beliefs are still important to the living Kurna people today.”



CEIH and Statewide Clinical Networks

Commission
on Excellence
and Innovation
in Health.



Healthcare is in the midst of dramatic change.

New technologies, new medications and new approaches for treating the sick have changed the way we deliver care.

**...to deliver better health,
we need better healthcare.**



**Together, let's create
better healthcare for
South Australians**



What we want

Excellent health
outcomes

Excellent experiences
for everyone

Consumers, carers and
clinicians engaged in
design, delivery and
evaluation of health
services

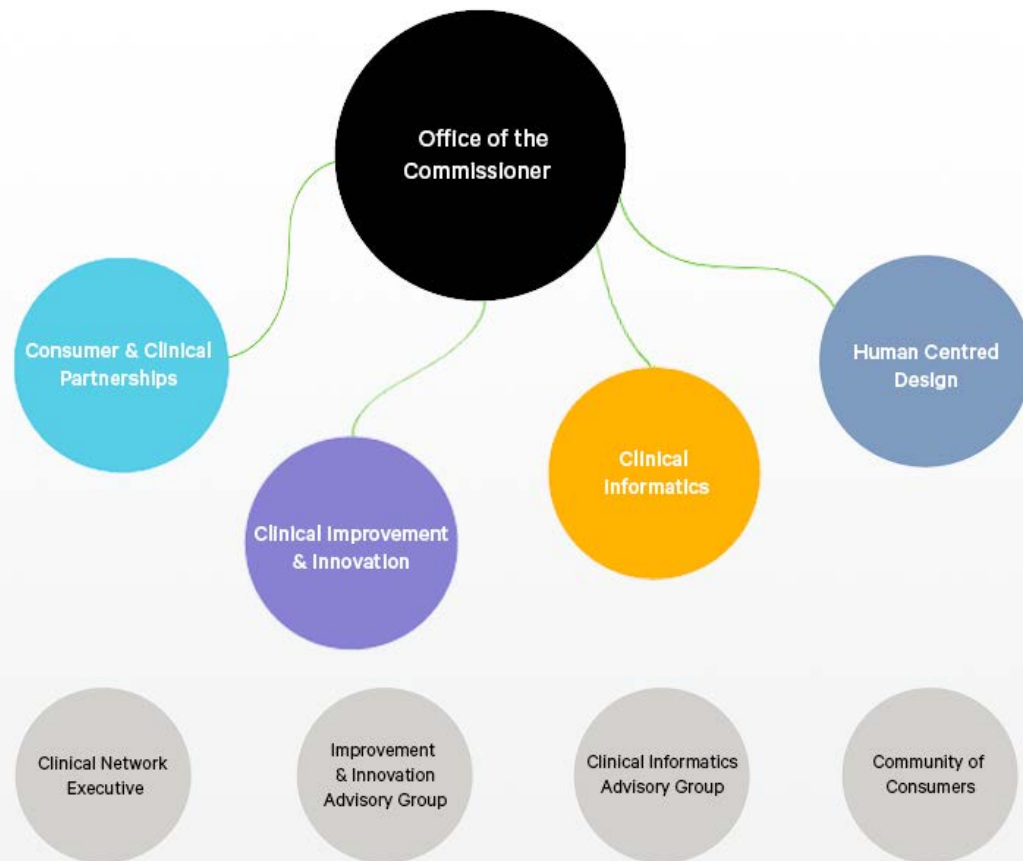
Increased confidence
and pride in the South
Australian health
system

A culture in the health
system of innovation
and striving for
excellence

SA recognised as having
an excellent health
system and a leader in
healthcare innovation



CEIH Clinical Advisory Council





Clinical Informatics

- A learning health system embeds evidence throughout the entire system.
- Creating data and analytics training and development opportunities so workers can have the skills and tools to help them in their work.
- Running data analytics for people to understand and use their own data better and how to analyse it.





Clinical Improvement and Innovation

- Helping create innovation that makes a difference – not change for change sake.
- Horizon scanning on the next big thing we need to prepare for.
- Helping build confidence to think differently.
- Putting imagination to work.
- With new thinking, we can empower people and build capacity so SA is the global leader in healthcare innovation.



Human Centred Design

- People are at the centre of everything we do.
- Involving everyone affected in design and change of processes.
- Helping increase compassion, empathy, kindness and gratitude in healthcare.
- Helping build wellness and resilience in the health workforce.

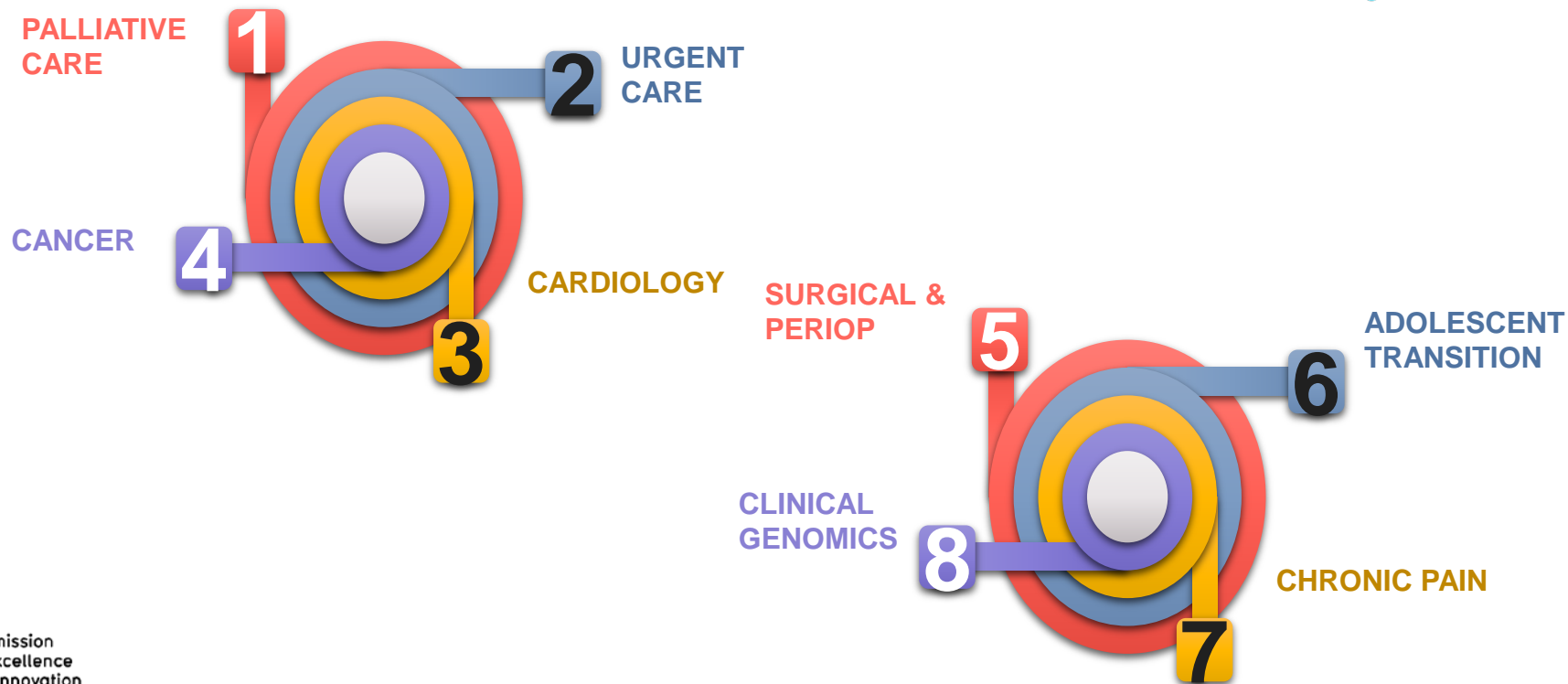




Consumer and Clinical Partnerships

- Everything we do involves partnering and collaboration for a better health system, because we can't do it alone.
- Creating Clinical Networks that bring people together in particular streams to discuss how we do things better, better protocols and their implementation.
- Creating Consumer and Clinical partnership groups where consumers' valuable voices are listened to and realised through better healthcare outcomes.
- Building skills in consumer engagement, and showing consumers how to use the system better.

Statewide Clinical Networks



Cancer



Dr Ganessan Kichenadasse

Priorities:

SA Cancer Control Plan..

Establishing a standardised statewide consent form for cancer care.

Cancer standards.

Cardiology



Dr Phil Tideman

Priorities:

Completing establishment of the following sub-groups to connect clinicians and consumers with special interest in:

- Adult Congenital Heart Disease
- Cardiac Genetics
- Cardiac Nursing
- Cardiothoracic Surgery
- Electrophysiology and Cardiac Electronic Implanted Devices
- Heart Failure

Aim to have a comprehensive statewide cardiac services plan by end of June 2022 noting this requires DHW partnership.

Palliative Care



Dr David Holden

Priorities:

The Palliative and End of Life Care Framework which will inform the development of a new Palliative Care Services Plan by the DHW.

Early scoping commenced to develop a Loss and Grief Framework for SA.

Working to understand the patient pathway for private patients to inform an approach and model of care to improve private patient access to public community based palliative care services where gaps in private services exist.

Urgent Care



Dr Caroline Phegan

Priorities:

A statewide urgent care geriatric model based on existing effective models (nationally) to reduce the rate of admission and increase community care.

Improve rural to metro transfer processes for consumers.

Improve access for consumers requiring urgent care for minor illness/ injury.

Adolescent Transition Care



Dr Jemma Anderson

The Statewide Adolescent Transition Care Clinical Network Network Steering Committee has been appointed and the first meeting is scheduled for 2nd March.

Dr Anderson has started working closely with young people who have expressed interest to understand their priorities for the network.

Chronic Pain



A/Prof Anne Burke

The Statewide Chronic Pain Clinical Network Steering Committee has been selected following an expression of interest process. The Steering Committee had its first meeting on 11 February.

A workshop to inform the priorities of the Network is taking place on 25 February 2021.

Clinical Genomics



A/Prof Christopher Barnett

The lead for the Statewide Clinical Genomics Network commenced on 3 December 2020. An expression of interest process for membership on the Statewide Clinical Genomics Network have closed with appointments imminent.

Two early projects identified:

- Improving screening for thalassemia.
- Developing online consent and information are currently being scoped.

Surgical and Perioperative Care



Dr Phil Worley

The Statewide Surgical and Perioperative Care Clinical Network Steering Committee has been appointed and the first meeting was held in early February.

Chronic Pain Care

A/Prof Anne Burke

Statewide Chronic Pain Clinical Network Lead .

The State-wide Chronic Pain Clinical Network:

Partnering to improve care

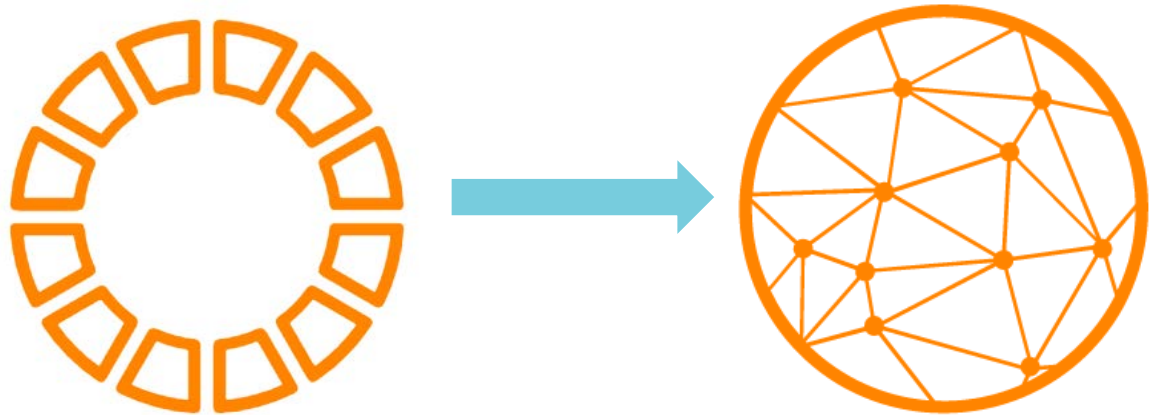
Commission
on Excellence
and Innovation
in Health.

Let's put imagination to work

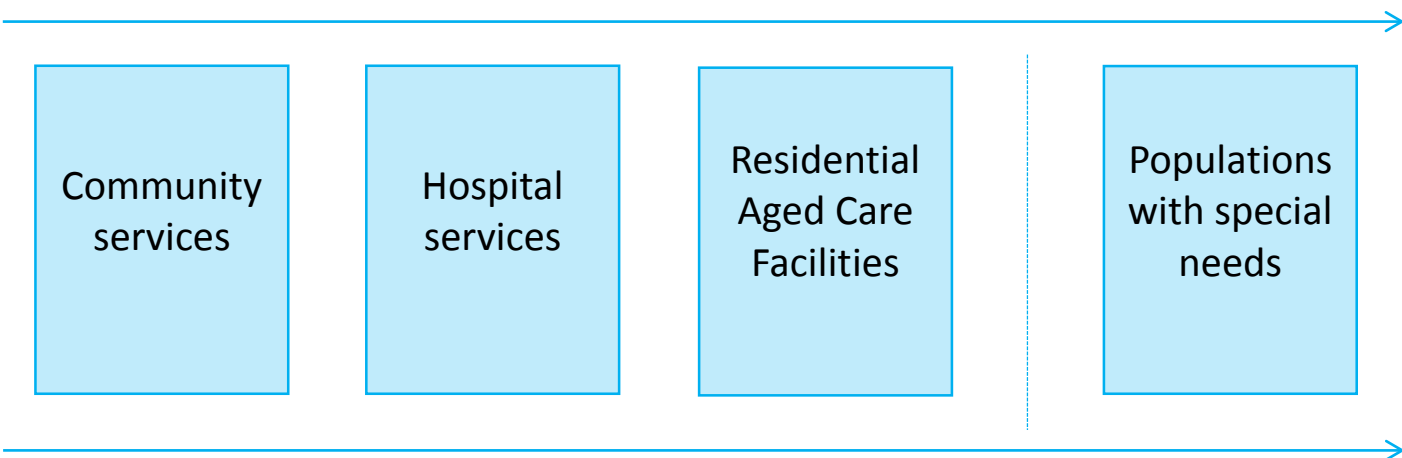
Background

- A little bit about me – who am I and why am I here?

Growing a clinical network to a community of practice partnering to improve care



JOURNEY: PAEDIATRIC ... ADOLESCENT / TRANSITION ... ADULT ... AGED CARE ... PALLIATIVE CARE



Different journeys = different pathways



PARTNERS: CONSUMERS ... CLINICIANS ... RESEARCHERS ... PUBLIC ... PRIVATE ... NGO ... PHN ...

KEY THEMES:

- Early intervention & prevention
- Timely access to treatment
- Evidence-based interdisciplinary care
- Workforce education and development
- Data transparency

Examples of Current Opportunities

NATIONAL

- National Strategic Action Plan For Pain Management
- Multidisciplinary pain education consortium
- Multidisciplinary pain education strategy
- MBS review – Pain Taskforce and Implementation Liaison Group
- Opioid reform – TGA, SHPA etc.

STATE

- SA Model of Care for chronic pain
- Reach for the Facts Campaign (RTW SA)
- Health pathways
- RDWA capacity building project
- Real time prescription monitoring

Activities to Date....

- Anne commenced mid October 2020
- Sector workshop scheduled for 3rd December 2020
- Steering Committee
 - EOI
 - Committee appointed late December 2020
 - First meeting 11th February 2021

Steering Committee:

Lived experience representatives: *Mary Wing* (adult)

Elizabeth Robinson (paeds to young adult)

Tertiary service representatives: *Tim Semple* (CALHN - medical)

Noel Markham (SALHN - physiotherapy)

Mark Jones (NALHN - nursing)

Nicki Ferencz (WCHN - psychology)

PHN representatives:

Adelaide PHN & Country PHN

Clinical representatives:

Edwina Shannon – private services, research, education, OT

Jacinta Johnson – primary care, hospital, medication safety, pharmacy

Jackie Yeoh – GP liaison, shared care

- *Kin Lau* – RACGP, rural, aged care, hospital avoidance

Mark Cox – private services, psychology

Michael Findlay – addiction medicine

Sam Whittle – living guidelines, education, rheumatology

Susan Edwards – rural, pain service co-ordination, nursing

Activities to Date....

- Environmental scan complete
- Commenced mapping of key issues
- Established bimonthly meetings with QLD and NSW clinical networks
- Provided ministerial response regarding the National Strategic Action Plan for Pain Management
- Establishing relationships with key agencies

This is where you come in

growing a community of practice for sustained change

Workshop Session 1

- **The Ideal State**
- **Current gaps and barriers**
- **How do we overcome barriers?
What are the enablers?**



Workshop Session 2

- **What can we achieve in the next 3-5 years**
- **What do we do first? e.g. first 12 months**

**For more information
contact us at:**

 **@CEIH_SA**

 **CEIH**

 **CEIHSA**

CEIH@sa.gov.au

www.ceih.sa.gov.au



**Government
of South Australia**